

EuroCover LF



EuroCover LF Process – Technical File.

1 - Presenting the EuroCover LF Process

Covering the waste on a landfill on a daily basis is a legal requirement that tends to be taken up into the landfill exploitation permit issued by the authorities.

Normally such 'daily covers' are accomplished through the use of materials like sand, earth, rubble from building sites, slag or similar materials.

Quite often the cost of these materials is close to none and does not impact negatively the productivity of the landfill, even if

managing stocks of these materials is not always an easy task.

However, whatever system is used to optimize such stock management, finally the loss of landfill space and consequently landfill lifetime becomes evident in each cell.

Because the lifetime and productivity of a Landfill is directly linked to the optimization of the space that has been authorized to dump waste, it becomes an interesting quest to find an economical but at the same time performing solution that is specifically adapted to the landfills' exploitation constraints.

EuroCover LF - which is patented and registered under reference number 1159548 – offers a solution that is a perfect alternative to the traditional waste covers.

This innovating process has been designed and optimized by specialists in the field of efficient waste management, in order to offer an effective technical and financial tool for your Landfill.

Contents :

Process Description	1
The Process itself	2
Application	3-4
Check List	5-6



PROCEDÉ EuroCover L.F



DOSSIER
TECHNIQUE

EURO-TEC

Z.A. Grandalisse

148 Impasse Vue du Ciel

69124 COLOMBIER SAUGNIEU - France -

Tél. : + 33 (0)4 37 47 20 20 - Fax : + 33 (0)4 37 47 20 21



2 - EuroCover Application

EuroCover LF consists in spraying a watery-fibrous emulsion on top of the waste. This layer (also called slurry) is applied by a special machine (EUROSEEDER), which consists of a tank, an agitator with paddles, and a centrifugal pump. The application is done or from a slope side, or from the operator platform by canon, or from ground level through a hose.

- As every job-site has its own particularities, a check list (as further in this file) should be used in order to list and evaluate all the site specific constraints.
- EuroCover LF is main advantages are:
 - Increase of Landfill lifespan in a 1 to 10 ratio in comparison to daily covers based on sand, earth etc.
 - Less production of leachate: the fibres of which EuroCover LF consists, possess a very high rainwater absorption capacity

(absorption/evaporation capacity in the range of 600% of dry weight) and therefore act like a buffer that still is susceptible to evaporation.

- Environmentally respectful: limits blow-off litter from the moment it is applied, as well as offering an aesthetical integration of the Landfill into the landscape.
- Ease of application regardless of slope steepness or topography of the Landfill
- Speed of application : Up to 2500m² per hour can be covered by a team of 2 workers
- Anti-Odour effect: the fibre matrix also performs as a bio-filter that partially fixes odours

EuroCover LF is a non-toxic product (does not contain any heavy metals or petroleum products) and does not affect water quality.

Finally, EuroCover LF – in its flame retardant version (following US ASTM standard D6523), is non-flammable.

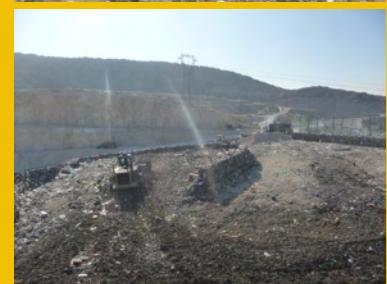


Couverture classique par matériaux terreux

Photo 1: Transport matériaux



Photo 2,3,4,5: Régalage terre de couverture



Dossier technique EuroCover LF

Edition Février 2013
O. Rosset

Application Steps for EuroCover LF

Check of the Landfill Upper Layer



1

Generally, in order to optimize and maximize the use of a cell, the waste is compacted in order to reduce its volume. Therefore the 'carrier' zone tends to be sufficiently stabilized to allow for an efficient application of the fibre matrix.

EuroCover is applied at a rate of +/- 6 litres per m².

This rather important application rate needs a quick and sufficient refill capability on-site.

Preparation of the EuroCover LF Hydraulic Mix



2

When the machines' tank is filled, the ingredients of the fibre matrix (all combined in one component) are introduced in the tank where a potent agitator with paddles that turns in 2 directions, will mix them.

The mixing power of the machine provides a homogeneous, slicky blend of the product.

Applying EuroCover LF



3

The EuroSeeder is conveniently placed there where – by using the canon – the area that is to be treated can be reached easily. Those areas with difficult access can be worked upon by using the hose.



Application Steps for EuroCover LF

Applying EuroCover LF



4

The operator ensures the machine operation and handling (start & stop, mixing of the slurry, pump operation, recirculation of material back into the tank).



Results after some Days



5

A control carried out after Day +6 to check the consistency of the applied EuroCover LF shows no degradation and good consistency. The green colour has faded.

Manpower required



6

The job-site manager is responsible for start-up and follow-up of the site.

He'll be in charge of the technical management and security of the site as well as timely ordering of materials and products.

2 Operators will ensure the EuroSeeders operation, preparation of EuroCover LF and the final application of it on-site.

2 people of the Landfill site will be in charge of the logistic support, the handling of the hoses (whenever needed) and other handling tasks.



Important notice :

The following services remain under the Landfills' management responsibility :

- Acquiring and managing all legal access details in order to be able to access and operate on the Landfill site
- To provide a space (closed) where the EuroCover LF components can be safely stored
- To provide a space where the equipment can be taken care of, washed and rinsed with clean water
- On-site access to a water source with sufficient flow rate (pond, water basin, fire hydrant or similar)